

PINNACLE

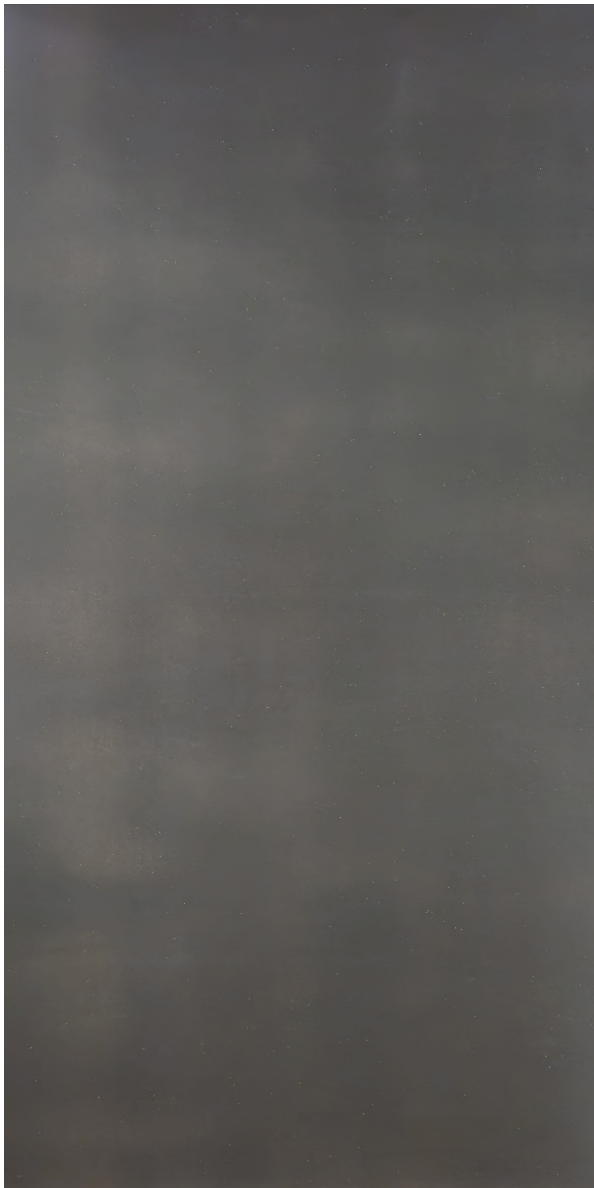
DECORATIVE LAMINATES

Phenolic Backer sheets are intended for interior application to the backside of Pinnacle brand decorative laminate sheets.

- Sheet width: 48.25" (1225.55 mm)
- Sheet height: 96.25" (2438.40 mm)
- Sheet thickness: 0.030" (0.762 mm)

Phenolic Backer sheets should be stored horizontally with a protective sheet or board on top to protect from damage. Ideal storage conditions are approximately 78° F (24° C) at 45% to 55% relative humidity.

Fabrication should follow the Pinnacle recommended procedures, conditions and practices as specified by ANSI A-161.2-1998 (revised), NEMA LD3-2005 and "Architectural Woodwork Quality Standards, Guide Specifications and Quality Certification Program" guidelines of the Architectural Woodwork Institute where applicable.



Phenolic Backer sheets are certified for:
GREENGUARD, FSC and NEMA LD 3-2005



LD3-2005